

Our mission

Caring for our pets, inspired
by science and nature

1. Niemec B et al. WSAVA global dental guidelines. Journal of Small Animal Practice. 2020,61:E36-E161.
2. Di Cerbo A et al. Therapeutic E ectiveness of a Dietary Supplement for Management of Halitosis in Dogs. J Vis Exp. 2015,6(101):e52717.
3. Enlund K et al. Dental home care in dogs - a questionnaire study among Swedish dog owners, veterinarians and veterinary nurses. BMC Vet Res. 2020,16:90.
4. Cheng HC et al. Effectiveness of Enzyme Dentifrices on Oral Health in Orthodontic Patients: A Randomized Controlled Trial. Int J Environ Res Public Health. 2019,16(12):2243.
5. Rendueles O et al. Antibiofilm polysaccharides. Environ Microbiol. 2013,15(2):334-346.
6. Praveen NC et al. In vitro Evaluation of Antibacterial Efficacy of Pineapple Extract (Bromelain) on Periodontal Pathogens. J Int Oral Health. 2014,6(5):96-98.
7. Sidhu P et al. Therapeutic benefits of liquorice in dentistry. J Ayurveda Integr Med. 2020,11(1):82-88.

Distributed by Samaxia Ltd,
BF13 The Terrace,
Grantham Street,
Lincoln LN2 1BD, UK
+44 (0) 1522 454670
enquiries@samaxia.com
www.samaxia.com

45, bd Marcel Pagnol
06130 Grasse - France
+33 4 93 09 85 79
www.mplabo.com

MP
LABO
Innovative by Nature



Samaxia
INSPIRED FOR HEALTH



Buccaclean® gel Freshness for bonding moments

Buccaclean® gel, healthy mouth and
soothed gums in an easy way



A new generation of applicator that **facilitates dental care**



A unique combination of enzymatic complex and anti-adhesive agents **to fight against dental plaque, tartar, and bad breath**



Liquorice extracts for the **comfort of the gum**



www.mplabo.com

Poor dental health is common in dogs and cats¹,

Affects on average :



ACT QUICKLY IN ORDER TO REDUCE THE DEVELOPMENT OF:



The main cause: dental plaque

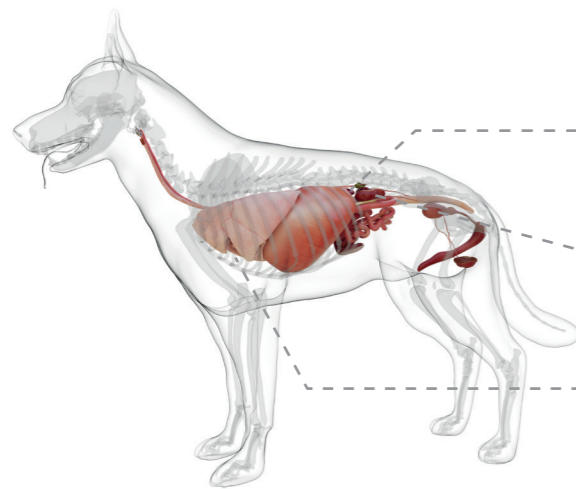
- Bacteria, contained in a matrix made of salivary glycoproteins and extracellular polysaccharides
- Up to 10¹² bacteria per grams captured
- These bacteria are 1,000 to 1,500 times more resistant to antibiotics and antiseptics than other bacteria

Numerous consequences on health¹,



Local

- Oro-Nasal fistula
- Secondary fractures



Systemic

Damage to :



Liver parenchyma



Kidney and bladder



Heart



Pain: dental pain can be severe in humans. Animals show less obvious signs, but they possibly have the same level of pain as human beings.

And a psychosocial effect of bad breath

The bond between the animal and their owners is significantly impacted²
Dental care is important but poorly done: close to 2/3rd of pet owners consider brushing the teeth of their dog on a daily basis but in practice, less than 4% do it³

How to facilitate dental care to empower the bond between the animal and their owners?

Buccaclean[®] gel : A healthy mouth and soothed gums in a simple way

Healthy mouth and fresh breath

Fights against the bacterial biofilm and dental plaque



Reinforces the natural defenses with the use of **peroxydases**⁴

- Enzymes naturally present in the saliva
- Interferes with the glucose metabolism: limits the bacterial growth
- Fosters the formation of Thiocyanate ions: anti-bacterial activity



Limits the bacterial adhesion with an **antibiofilm polysaccharide**⁵

- Blocks the mechanism of bacterial adherence
- Helps to maintain the balance of oral microbiota



Alters bacterial viability with the use of **bromelain**⁶

- Protease naturally present in the pineapple plant
- Exerts an *in vitro* activity against bacteria of the dental plaque

Oral comfort, Soothing Effect

Soothes gums



Liquorice extracts⁷

- Modulation of the synthesis of pro-inflammatory mediators released by the bacteria in the dental plaque
- Improve the comfort and cell regeneration of injured gums

Ease of use

Makes pet owner's life easier thanks to a unique applicator

- 1 **Pre-assembled** packaging that limits manipulation
- 2 **A soft tip for a pain-free application** to massage the gum gently



Fun

Meat flavour for a higher acceptance

Why recommend Buccaclean[®] gel ?



Comfort

- A soft applicator providing a **gentle massage of the gums**
- A **daily treat** thanks to the meat flavour
- **Soothed gums**



Convenience

- **Easy-to-use** thanks to a pre-assembled packaging
- **Comfort of use** with an applicator that goes directly in the mouth



Health

- A **real innovation** that fosters dental care
- An **enhanced solution** against the bacterial biofilm
- A **chlorhexidine-free alternative**